

# Index of Details Miscellaneous

Plate No.

Name

MI-1	COMMERCIAL/INDUSTRIAL DRIVEWAY
MI-2	RESIDENTIAL DRIVEWAYS
MI-3	ADJUSTING RINGS & STEPS
MI-4	CLASS C PIPE BEDDING
MI-5	"SNOUT" OIL-WATER-DEBRIS SEPARATOR
MI-6	PROJECT SIGN
MI-7	TEMPORARY MAILBOX
MI-8	TYPICAL MAILBOX FOR NEW DEVELOPMENTS
MI-9	RAILING DETAIL
MI-10	GRADING DETAIL



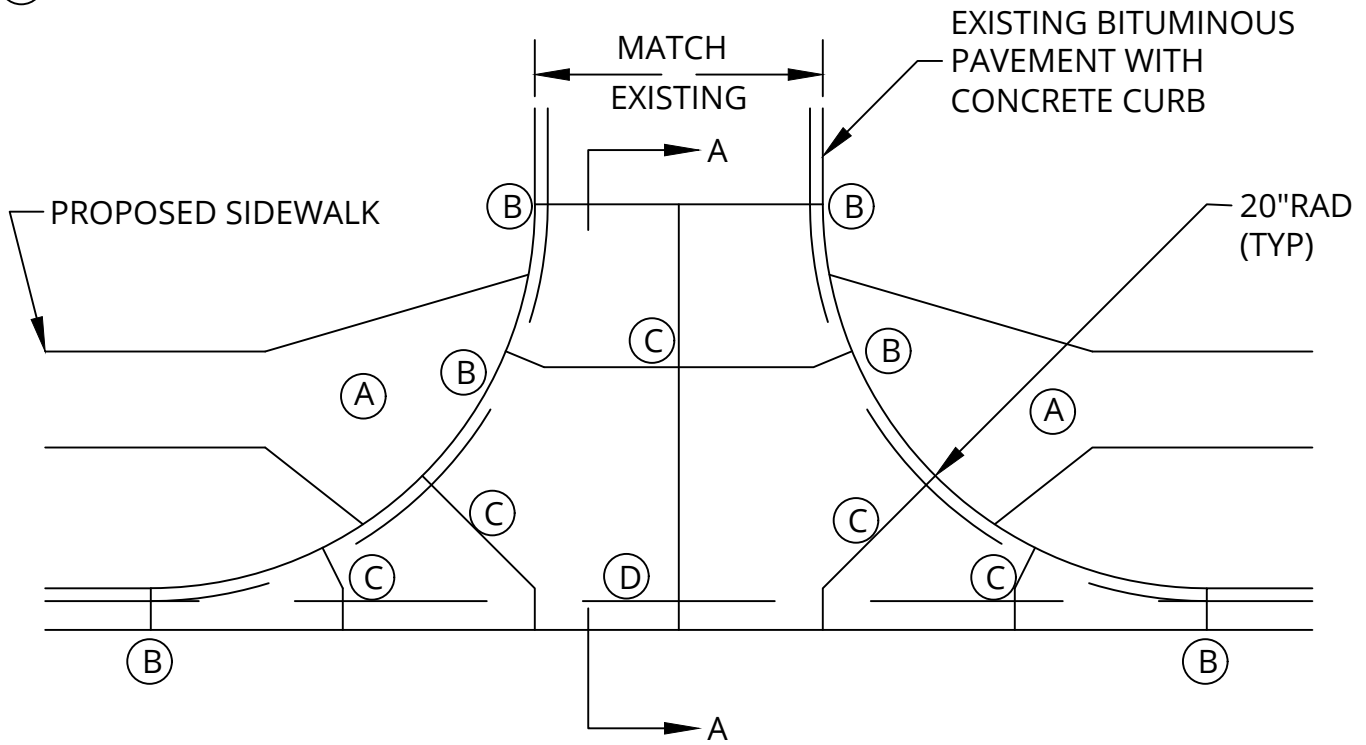
2024 STANDARD DETAIL PLATE

City of Blaine - Engineering Department

10801 Town Square Drive NE, Blaine, Minnesota 55449 763-785-6172 Fax 763-785-6139

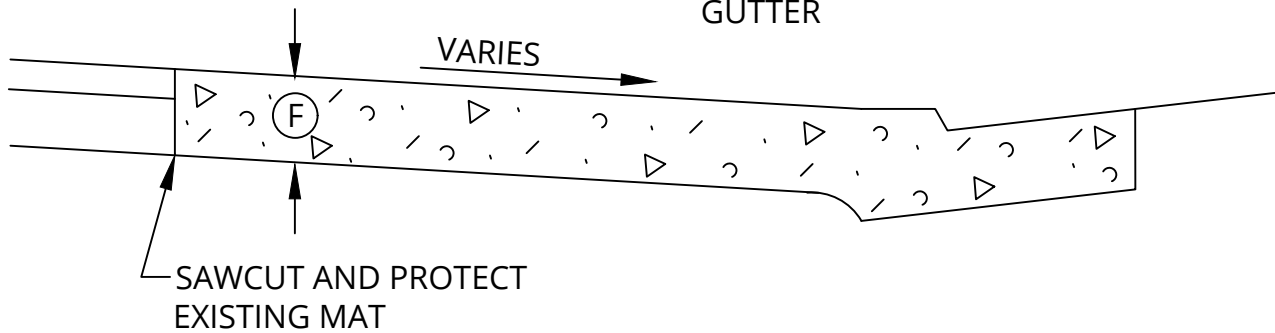
NOTES:

- (A) - PEDESTRIAN CURB RAMP (FULL WIDTH OF SIDE WALK)
- (B) - EXPANSION JOINT
- (C) - FORMED CONTRACTION JOINT
- (D) - MAINTAIN GUTTER FLOW LINE
- (E) - DRIVEWAY MUST BE PLACED 1/2 AT A TIME TO ALLOW ACCESS TO SITE



PLAN VIEW

- (F) - MINIMUM 6" CONCRETE, OR 3" BITUMINOUS WITH 6" AGGREGATE BASE OR MATCH EXISTING IF THICKER w/ VALLEY GUTTER



SECTION A-A  
COMMERCIAL/INDUSTRIAL  
DRIVEWAY

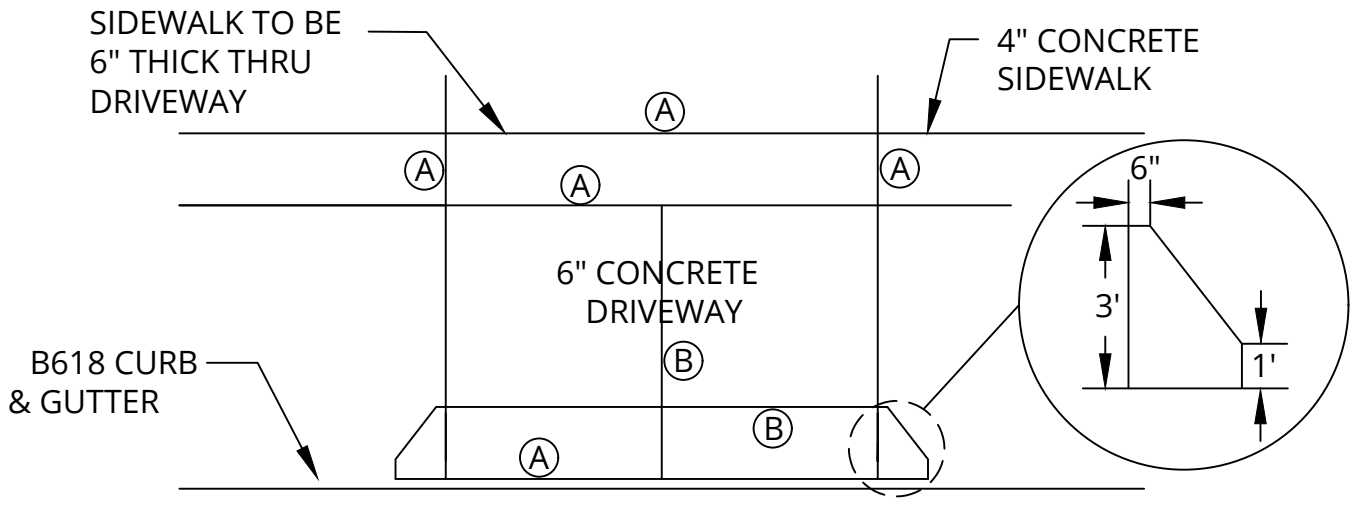
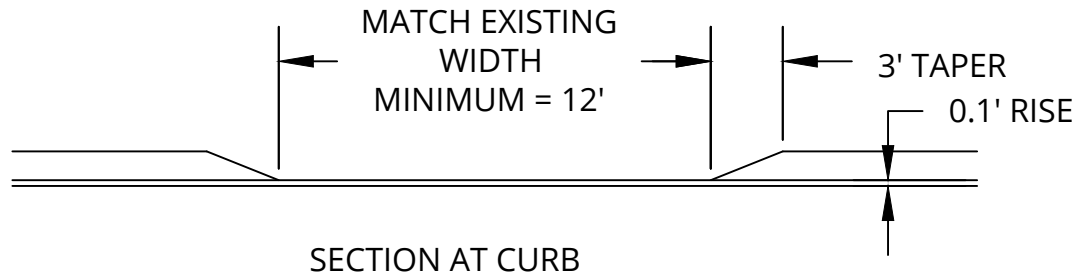
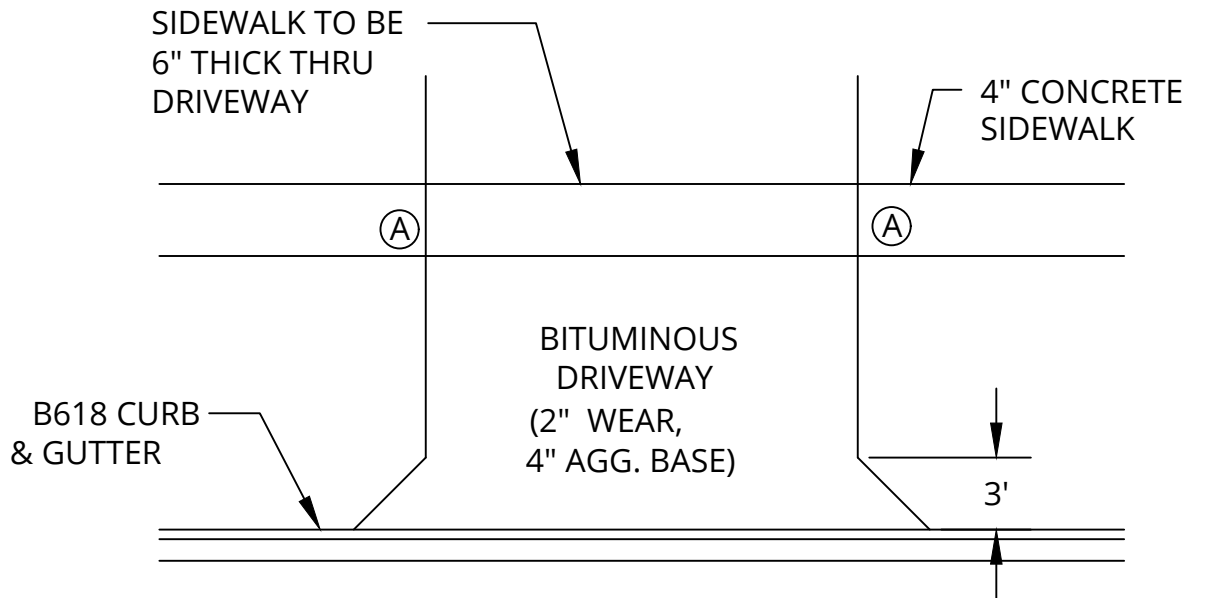
Plate No MI-1



2024 STANDARD DETAIL PLATE

City of Blaine - Engineering Department

10801 Town Square Drive NE, Blaine, Minnesota 55449 763-785-6172 Fax 763-785-6139



NOTES: MINIMUM 6" THICK CONCRETE OR MATCH EXISTING.  
 REFER TO MNDOT STANDARD PLATE 7035 FOR MORE INFORMATION REGARDING JOINT CONSTRUCTION.

(A) - EXPANSION JOINT      (B) - CONTRACTION JOINT  
 SEE CS-4 & CS-5 FOR DRIVEWAY WIDTH.

## RESIDENTIAL DRIVEWAYS

Plate No. MI-2

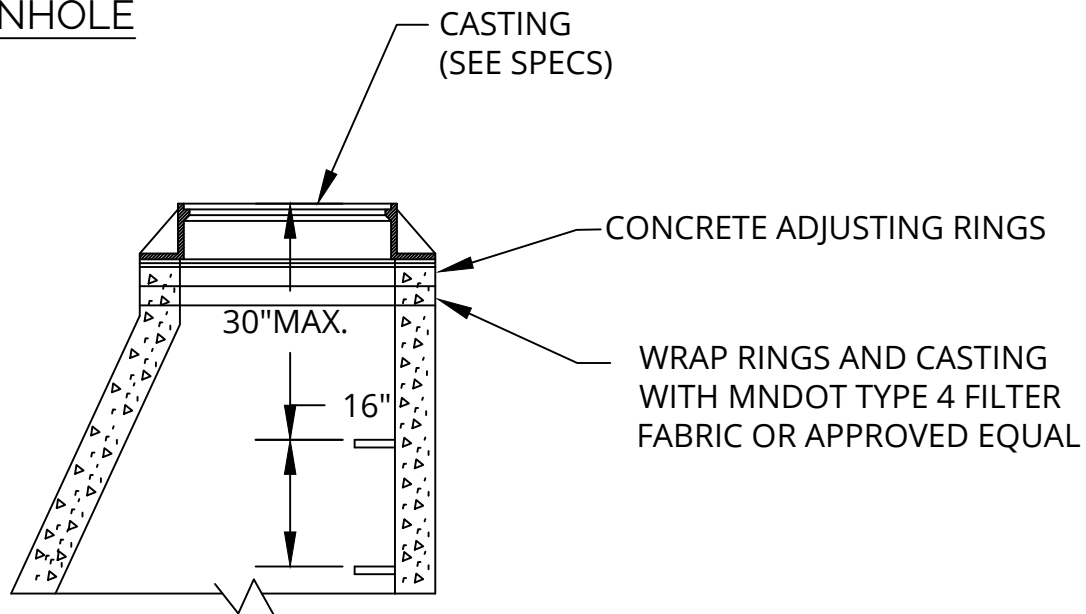


# 2024 STANDARD DETAIL PLATE

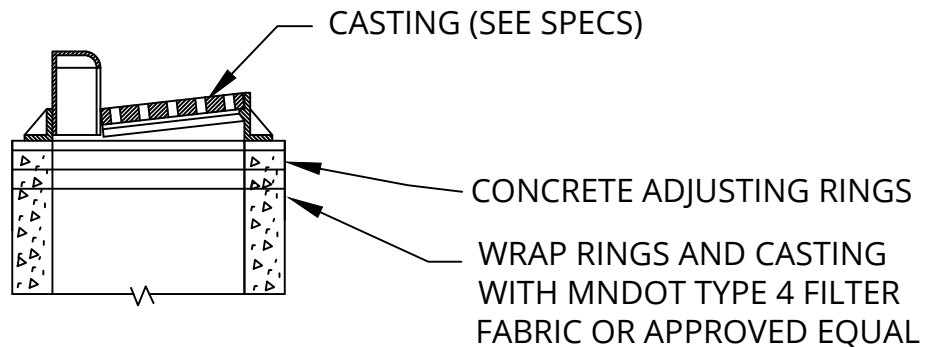
City of Blaine - Engineering Department

10801 Town Square Drive NE, Blaine, Minnesota 55449    763-785-6172    Fax 763-785-6139

## MANHOLE



## CATCHBASIN



### NOTES:

1. USE MINIMUM OF 2-0.2' ADJUSTING RINGS, MAXIMUM OF 5-0.2' ADJUSTING RINGS. GROUT RINGS 1/4" MIN.
2. MANHOLE STEPS SHALL BE PER MNDOT PLATE 4180, TYPE W. STEPS SHALL BE LOCATED ON UPSTREAM WALL FOR PIPE SIZES UP TO AND INCLUDING 15" AND ON SIDE WALL FOR GREATER THAN 15".
3. LIDS FOR SANITARY SEWER SHALL BE MARKED "SANITARY" AND LIDS FOR STORM SEWERS SHALL BE MARKED "STORM".
4. NO WOOD SHIMS WILL BE ALLOWED.

## ADJUSTING RINGS & STEPS

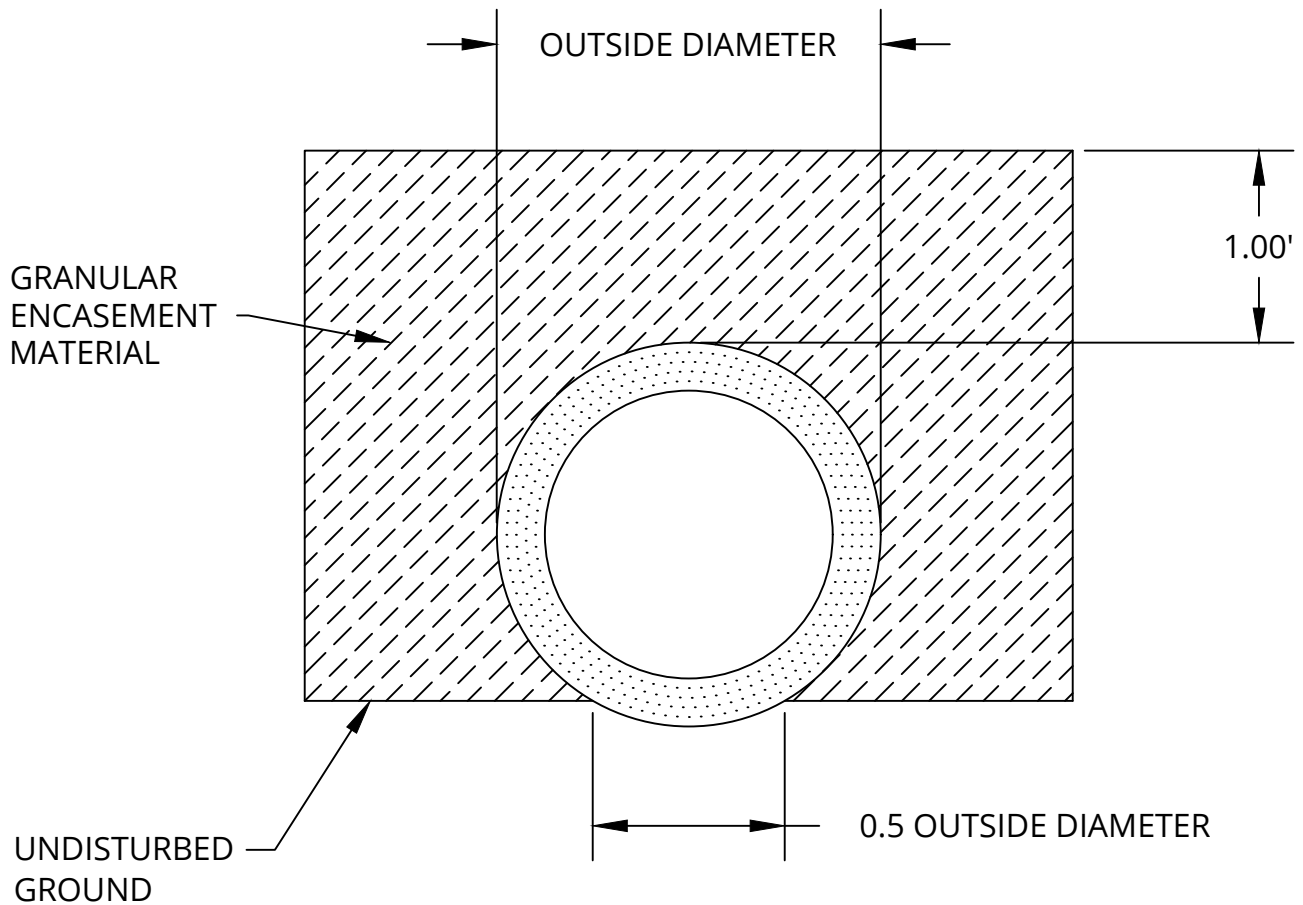
Plate No. MI-3



## 2024 STANDARD DETAIL PLATE

City of Blaine - Engineering Department

10801 Town Square Drive NE, Blaine, Minnesota 55449 763-785-6172 Fax 763-785-6139



NOTES:

1. THIS IS THE STANDARD PIPE BEDDING APPLICATION UNLESS OTHER BEDDING IS SPECIFIED.
2. THE BOTTOM OF THE TRENCH SHALL BE SHAPED TO FIT THE BARREL OF THE PIPE FOR AT LEAST 50% OF THE OUTSIDE DIAMETER OF THE PIPE. THE REMAINDER OF THE PIPE IS TO BE SURROUNDED TO A HEIGHT OF AT LEAST 1' ABOVE ITS TOP.
3. GRANULAR ENCASEMENT MATERIAL SHALL MEET THE REQUIREMENTS OF THE SPECIFICATIONS.
4. NATIVE BLAINE GRANULAR MATERIAL IS CONSIDERED TO MEET THE INTENT OF THIS DETAIL.

CLASS C PIPE BEDDING

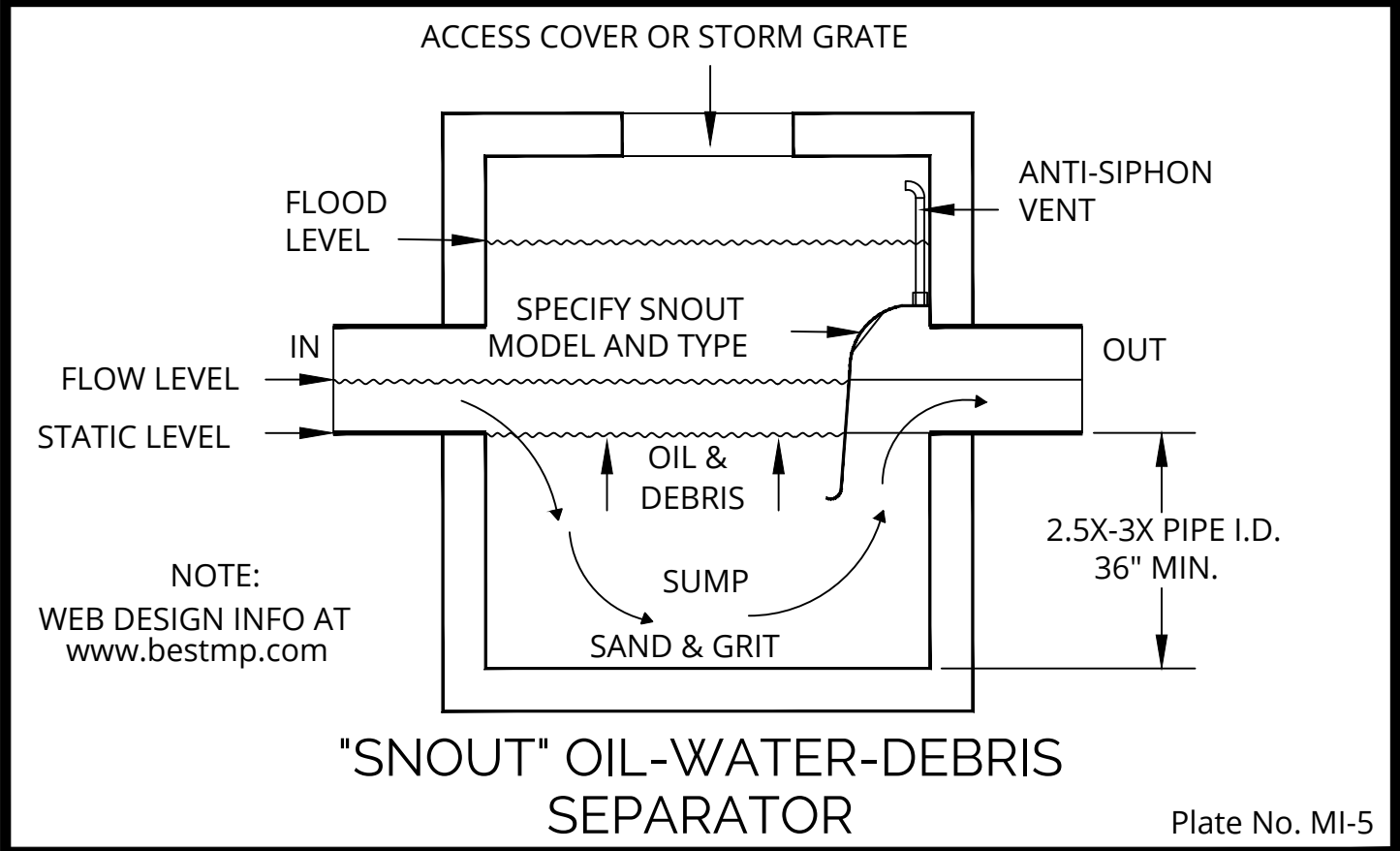
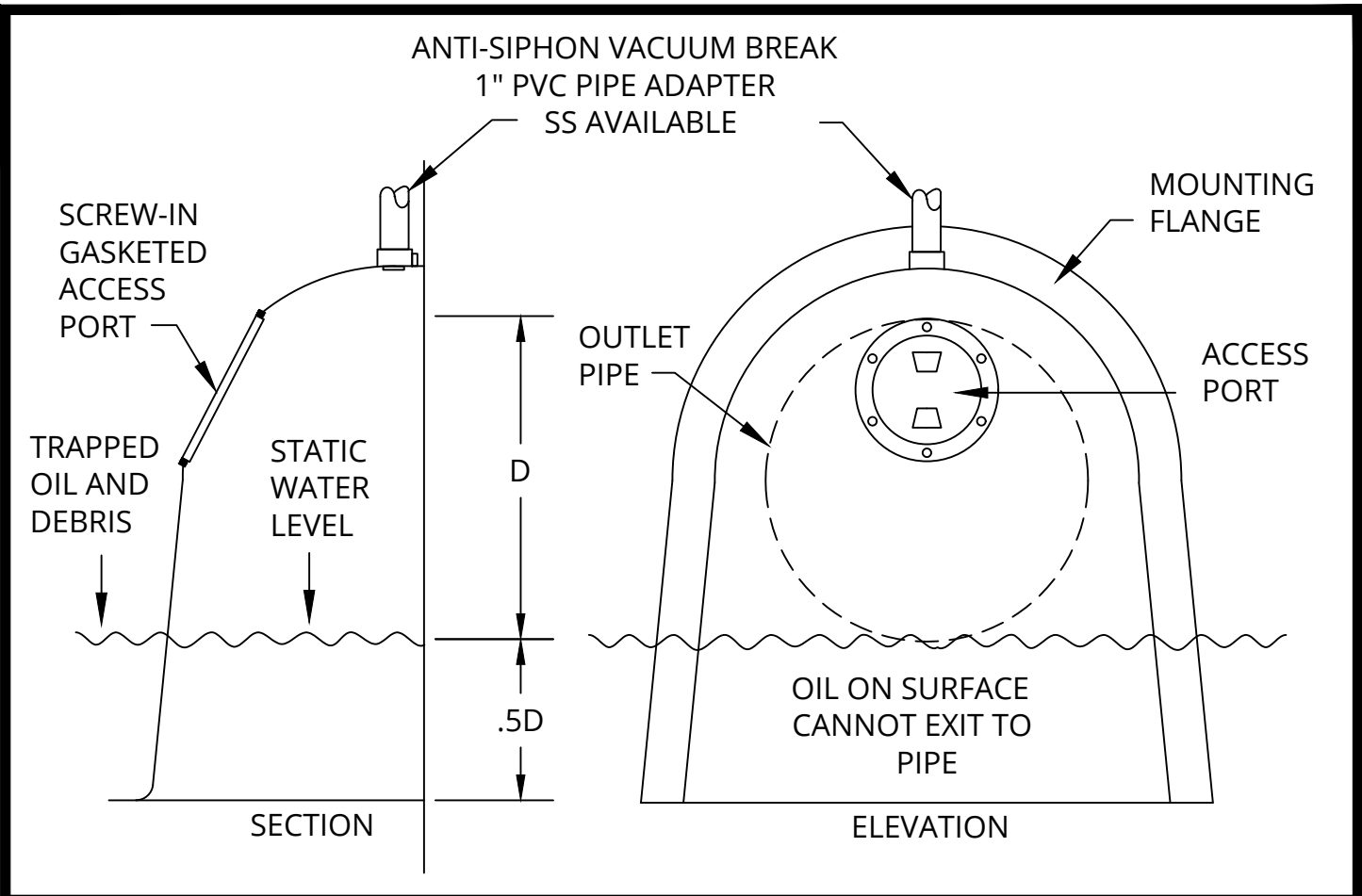
Plate No. MI-4



2024 STANDARD DETAIL PLATE

City of Blaine - Engineering Department

10801 Town Square Drive NE, Blaine, Minnesota 55449 763-785-6172 Fax 763-785-6139



"SNOUT" OIL-WATER-DEBRIS SEPARATOR

Plate No. MI-5



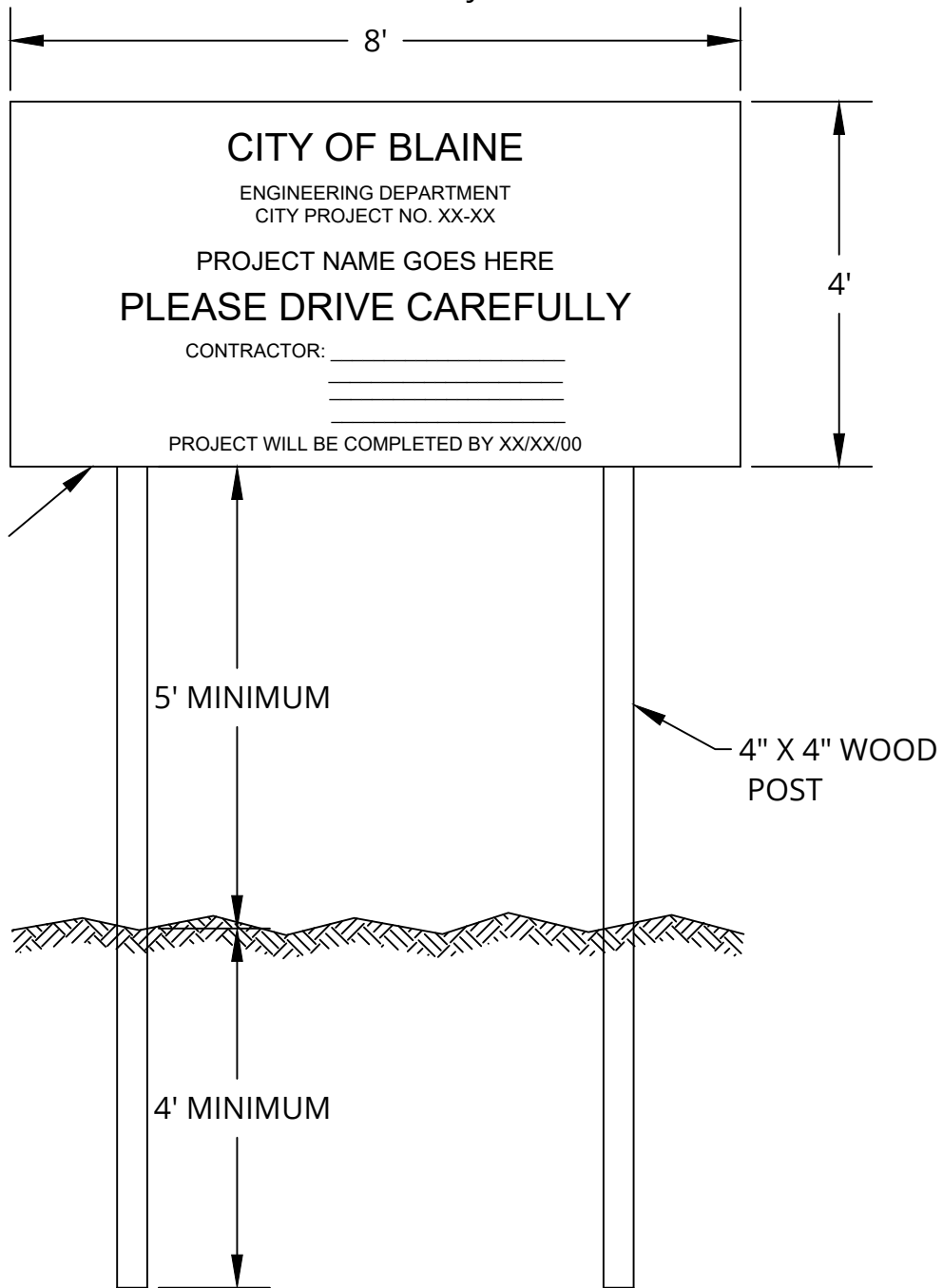
2024 STANDARD DETAIL PLATE

City of Blaine - Engineering Department

10801 Town Square Drive NE, Blaine, Minnesota 55449 763-785-6172 Fax 763-785-6139

NOTES:

PROJECT SIGN SHALL BE LOCATED AS NOT TO IMPAIR THE VISION OF MOTORISTS. THE CONTRACTOR SHALL REMOVE AND DISPOSE OF THE PROJECT SIGN UPON COMPLETION OF THE PROJECT.



PROJECT SIGN

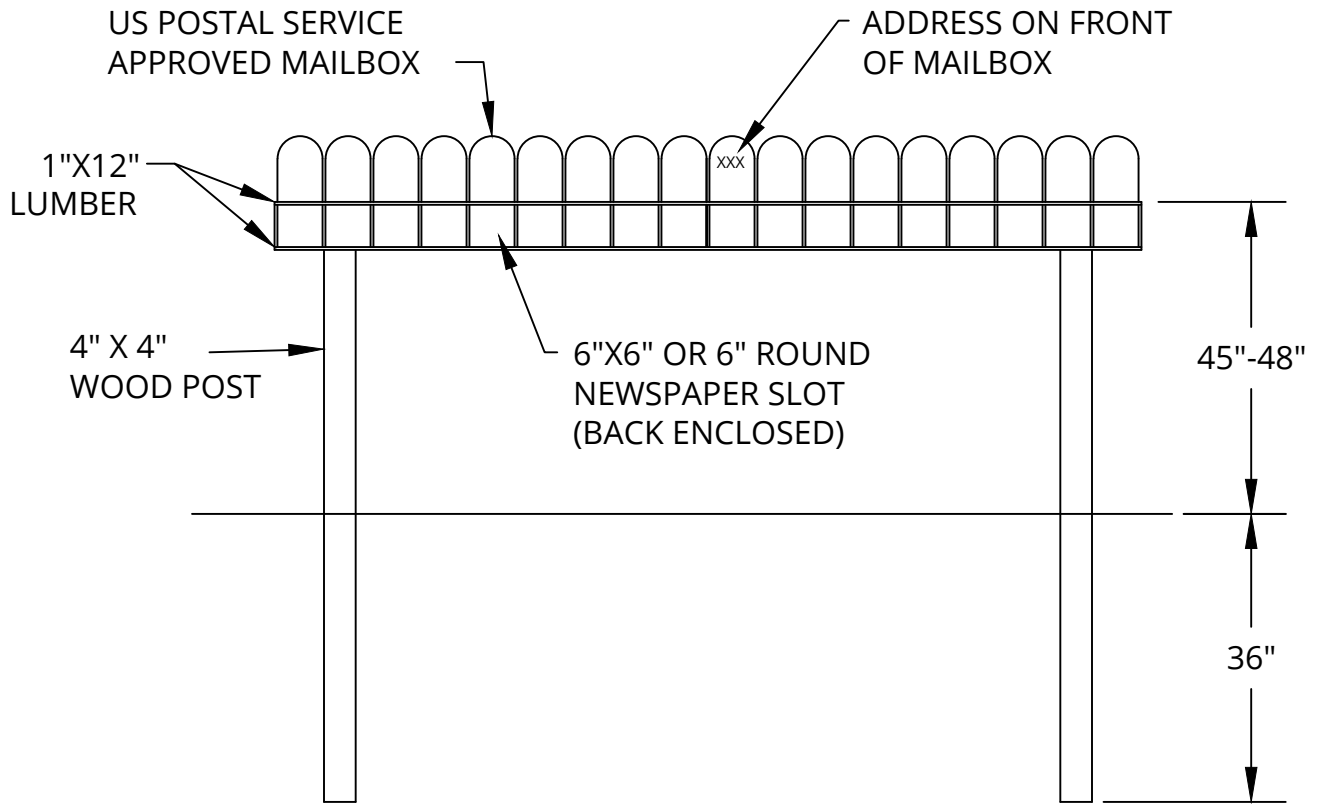
Plate No. MI-6



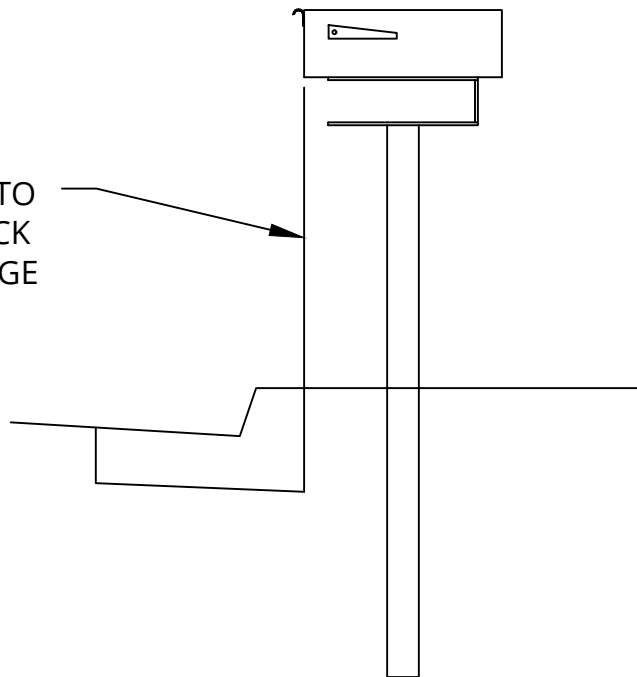
2024 STANDARD DETAIL PLATE

City of Blaine - Engineering Department

10801 Town Square Drive NE, Blaine, Minnesota 55449 763-785-6172 Fax 763-785-6139



FRONT OF MAILBOX TO BE INSTALLED AT BACK OF CURB LINE OR EDGE OF SHOULDER



## TEMPORARY MAILBOX

Plate No. MI-7



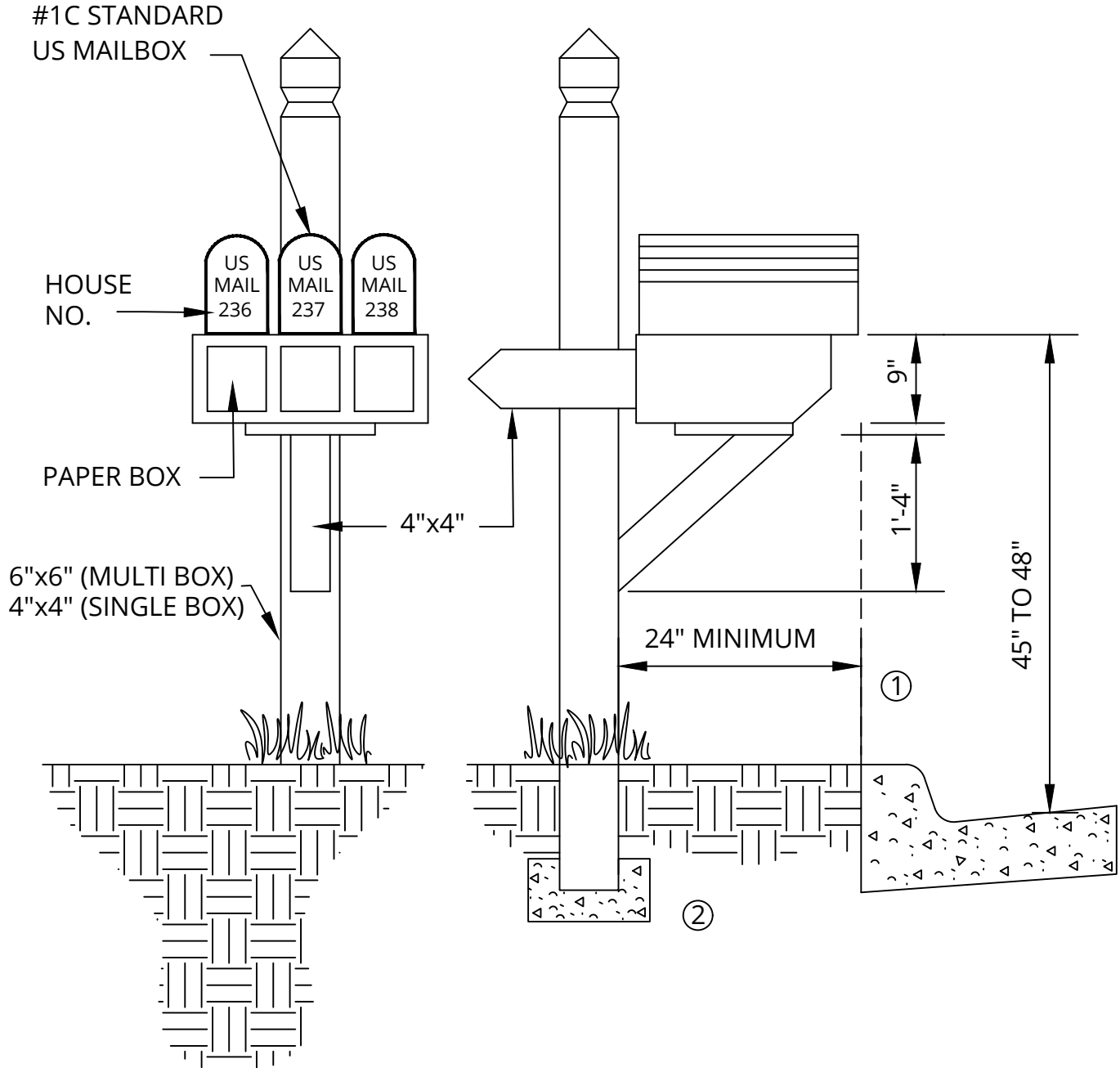
## 2024 STANDARD DETAIL PLATE

City of Blaine - Engineering Department

10801 Town Square Drive NE, Blaine, Minnesota 55449 763-785-6172 Fax 763-785-6139



- ① FRONT OF MAILBOX SHALL BE PLACED EVEN WITH BACK OF CURB.
- ② BOX, POST, FOUNDATION AND LAYOUT DESIGN MUST BE SUBMITTED TO ENGINEERING DEPARTMENT FOR APPROVAL.



## TYPICAL MAILBOX FOR NEW DEVELOPMENTS

Plate No. MI-8



### 2024 STANDARD DETAIL PLATE

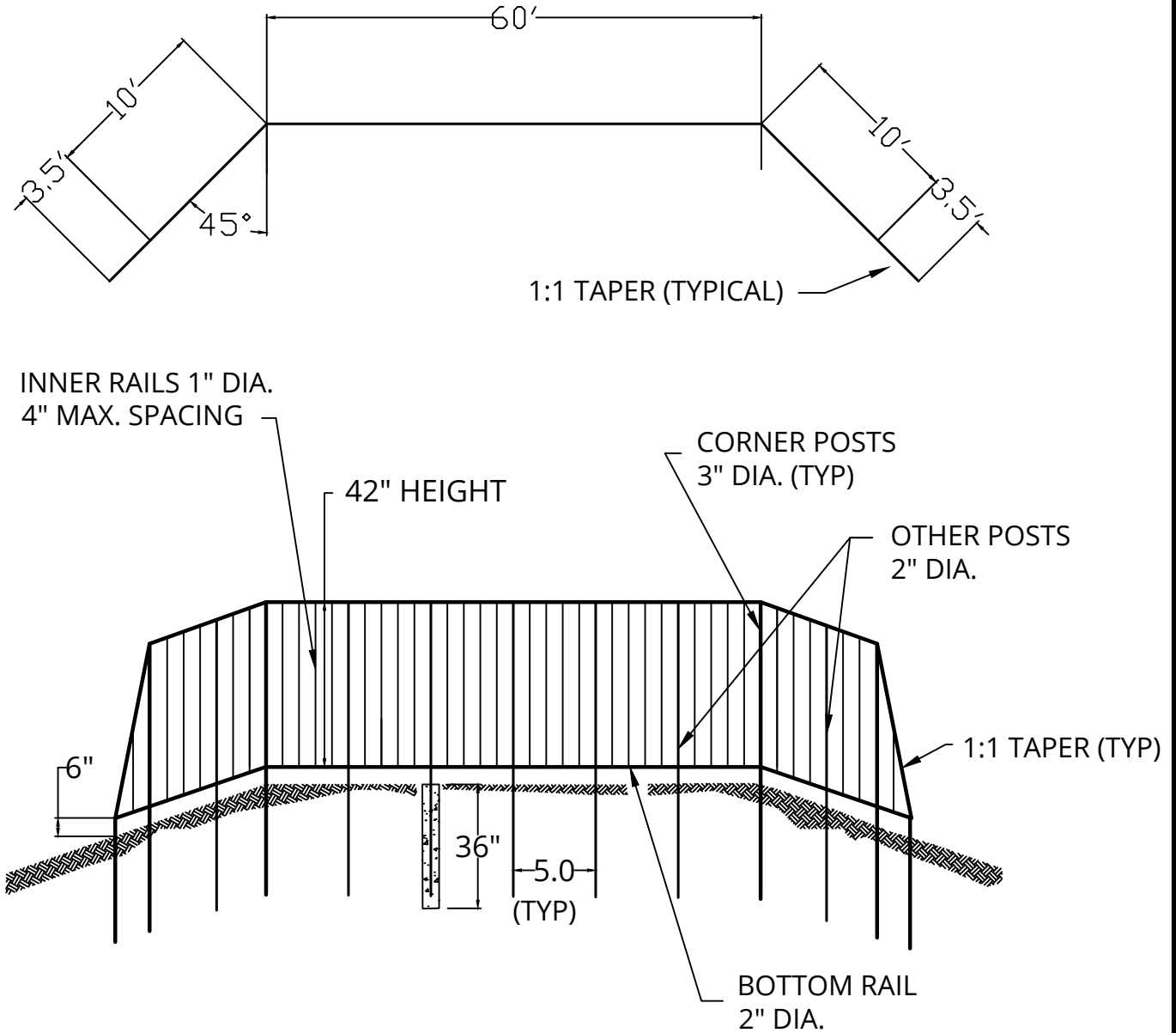
City of Blaine - Engineering Department

10801 Town Square Drive NE, Blaine, Minnesota 55449 763-785-6172 Fax 763-785-6139

STRUCTURE SHALL BE PAINTED WITH A RUST INHIBITIVE BLACK PAINT AFTER INSTALLATION.

USE STANDARD STEEL PIPE WITH WELDED CONNECTIONS CAPABLE OF WITHSTANDING 20 POUNDS PER LINEAL FOOT LATERAL PRESSURE AT ANY POINT.

MAXIMUM 4" OPENING BETWEEN POSTS AND/OR RAILS.



## RAILING DETAIL

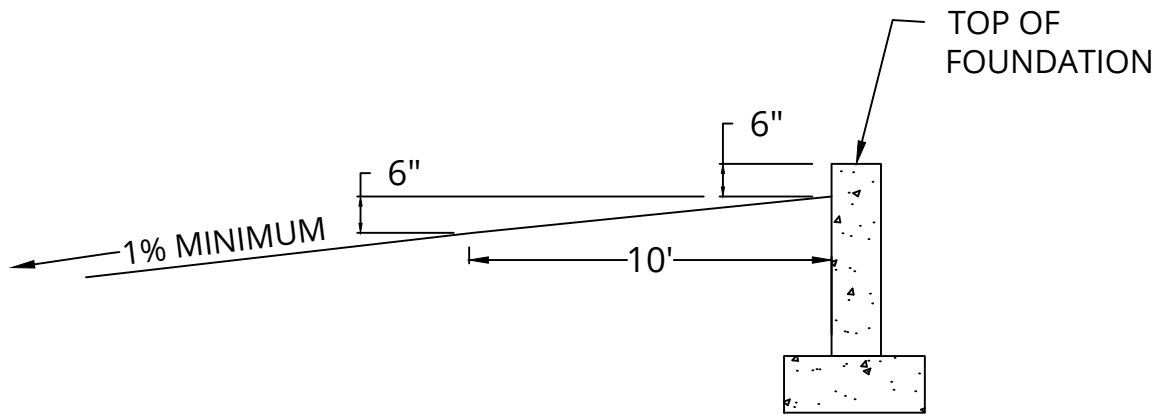
Plate No MI-9



## 2024 STANDARD DETAIL PLATE

City of Blaine - Engineering Department

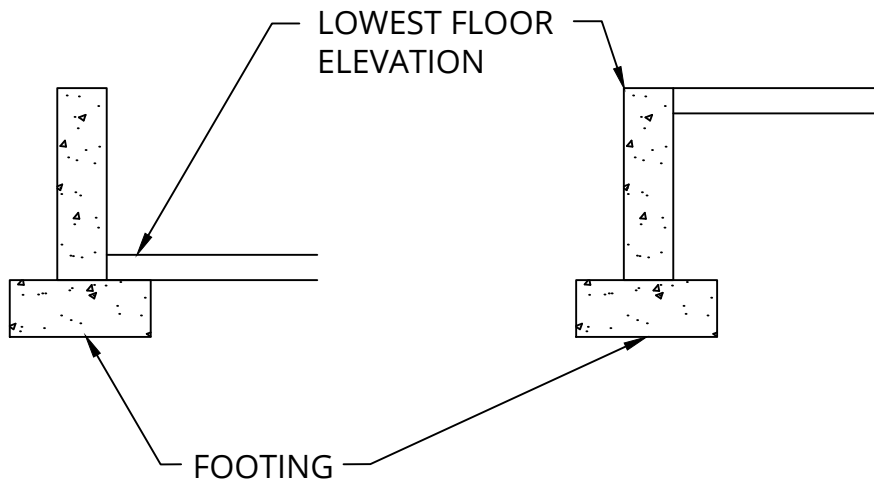
10801 Town Square Drive NE, Blaine, Minnesota 55449 763-785-6172 Fax 763-785-6139



TYPICAL SURFACE DRAINAGE AT HOUSE

FULL BASEMENT/  
LOOKOUT/SPLIT ENTRY

WALKOUT



LOCATION OF LOWEST FLOOR AS-BUILT ELEVATION

NOTE: LOWEST FLOOR ELEVATION MUST BE AFTER FOUNDATION IS CONSTRUCTED. CALCULATED ELEVATIONS ARE NOT ACCEPTABLE.

## GRADING DETAIL

Plate No. MI-10



## 2024 STANDARD DETAIL PLATE

City of Blaine - Engineering Department

10801 Town Square Drive NE, Blaine, Minnesota 55449 763-785-6172 Fax 763-785-6139